



FOLIO: 20/35130

SEARCH DATE	TIME	EDITION NO	DATE
-----	----	-----	----
21/11/2022	6:52 PM	-	-

VOL 13203 FOL 115 IS THE CURRENT CERTIFICATE OF TITLE

LAND

LOT 20 IN DEPOSITED PLAN 35130
LOCAL GOVERNMENT AREA CANTERBURY-BANKSTOWN
PARISH OF ST GEORGE COUNTY OF CUMBERLAND
TITLE DIAGRAM DP35130

FIRST SCHEDULE

NEW SOUTH WALES LAND AND HOUSING CORPORATION

SECOND SCHEDULE (1 NOTIFICATION)

1 F954722 EASEMENT FOR DRAINAGE AFFECTING THE PART OF THE
LAND ABOVE DESCRIBED 1.525 WIDE SHOWN IN DP385371

NOTATIONS

UNREGISTERED DEALINGS: NIL

*** END OF SEARCH ***



FOLIO: 18/35848

SEARCH DATE	TIME	EDITION NO	DATE
-----	----	-----	----
21/11/2022	6:52 PM	-	-

VOL 13402 FOL 204 IS THE CURRENT CERTIFICATE OF TITLE

LAND

LOT 18 IN DEPOSITED PLAN 35848
LOCAL GOVERNMENT AREA CANTERBURY-BANKSTOWN
PARISH OF ST GEORGE COUNTY OF CUMBERLAND
TITLE DIAGRAM DP35848

FIRST SCHEDULE

NEW SOUTH WALES LAND AND HOUSING CORPORATION

SECOND SCHEDULE (0 NOTIFICATIONS)

NIL

NOTATIONS

UNREGISTERED DEALINGS: NIL

*** END OF SEARCH ***

PLAN

and resumed for Housing Purposes
in Gov^t Gazette 7th June 1946

GEORGE
COUNTY OF CUMBERLAND

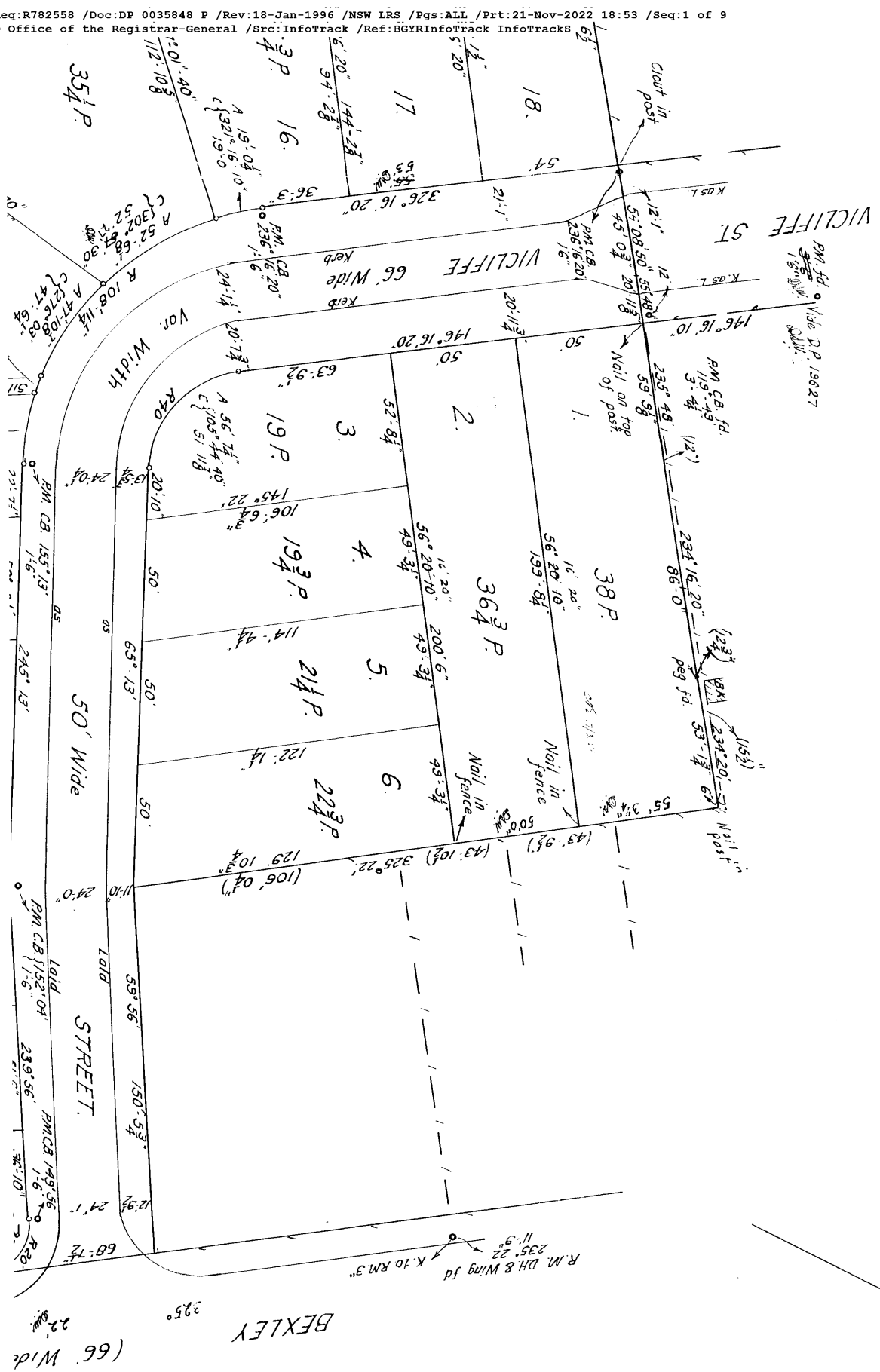
Scale : 40 feet to an inch

D.P. 35848

② ③

DP 358119

Sheet 1 of 2 Sheets



1586 L556/P3476

Detum line of Azimuth A-B

Subscribed and declared before me at Sydney
 this 15th day of September A.D. 1850

J. R. S. S. J. P.

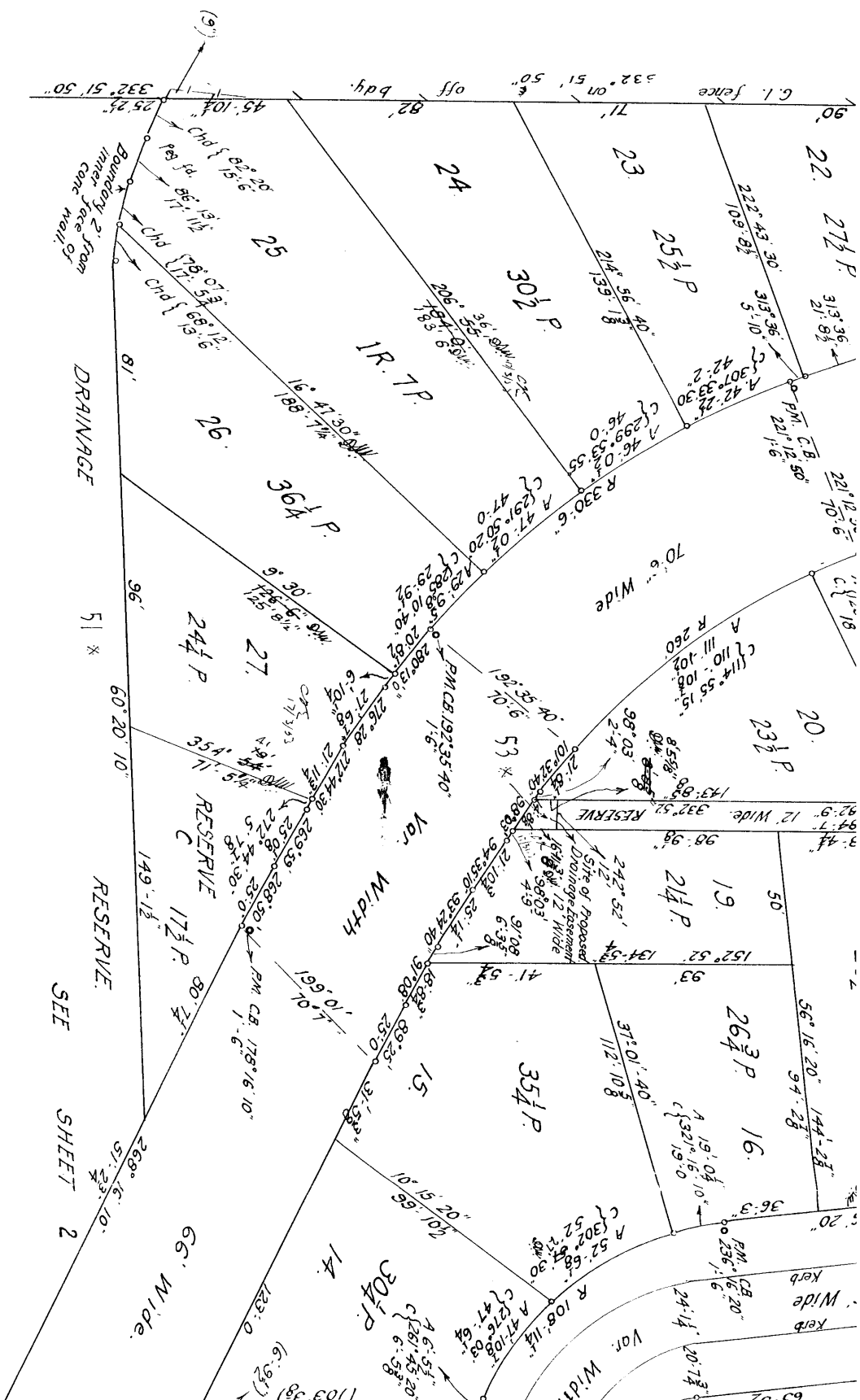
D.P. 35848

SH 1 OF 2

(E) 3

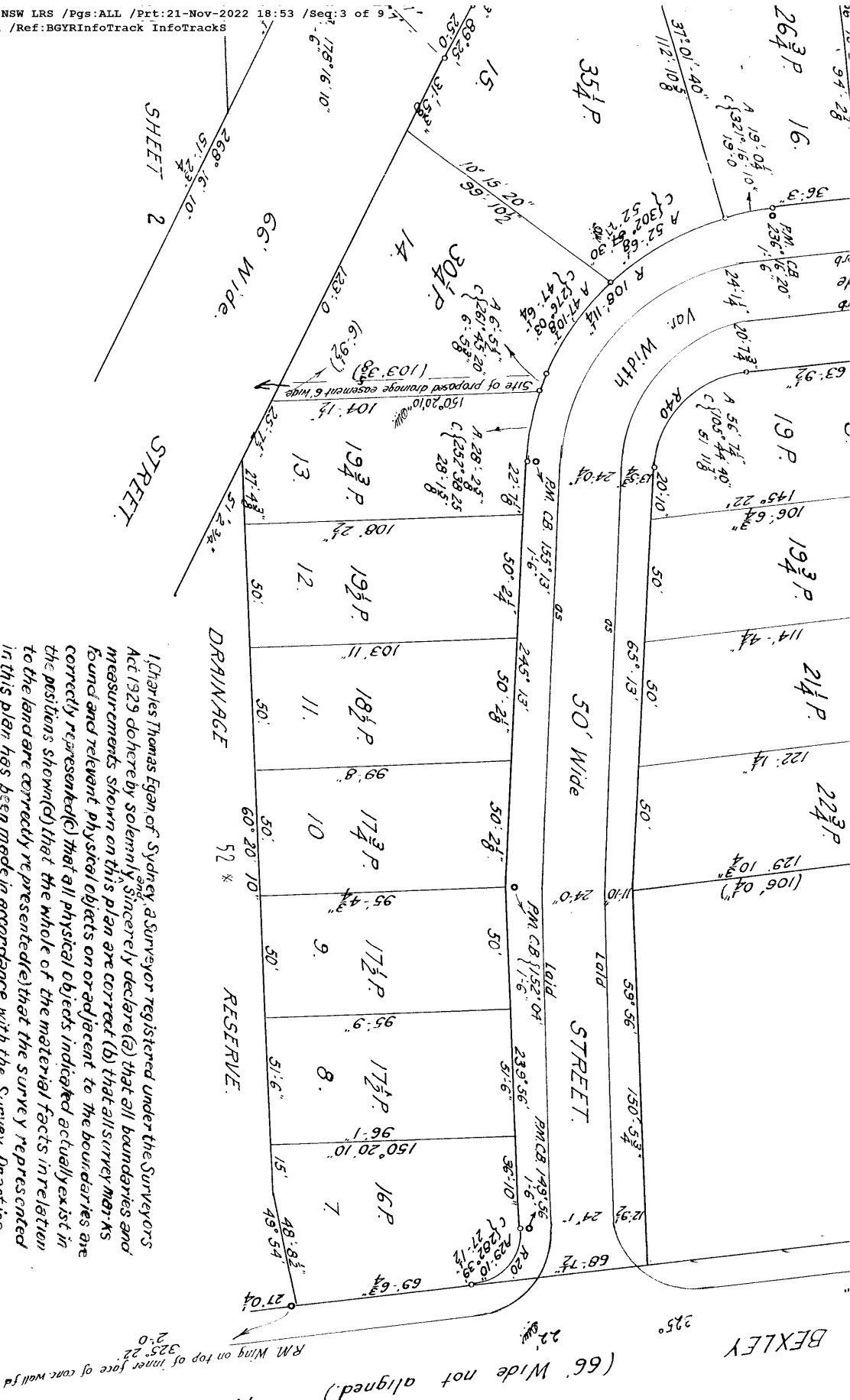
All alterations made are confirmed by me

1/4/53



SEE SHEET 2

1586 L556/P3476



I, Charles Thomas Egan of Sydney, a Surveyor registered under the Surveyors Act 1929 do hereby solemnly and sincerely declare (a) that all boundaries and measurements shown on this plan are correct (b) that all survey marks found and relevant physical objects on or adjacent to the boundaries are correctly represented (c) that all physical objects indicated actually exist in the positions shown (d) that the whole of the material facts in relation to the land has been made in accordance with the Survey Practice Regulations 1933 by me and was completed on 17th Aug 1950 and the permanent marks have been placed as shown hereon.
 And I make this solemn declaration conscientiously believing the same to be true and by virtue of the provisions of the Oaths Act 1900

Surveyor registered under the Surveyors Act 1929

C. Egan

D.P. 35848

SH 1 of 2

⑤

F457964 24.5.51
 (2 Sheets)

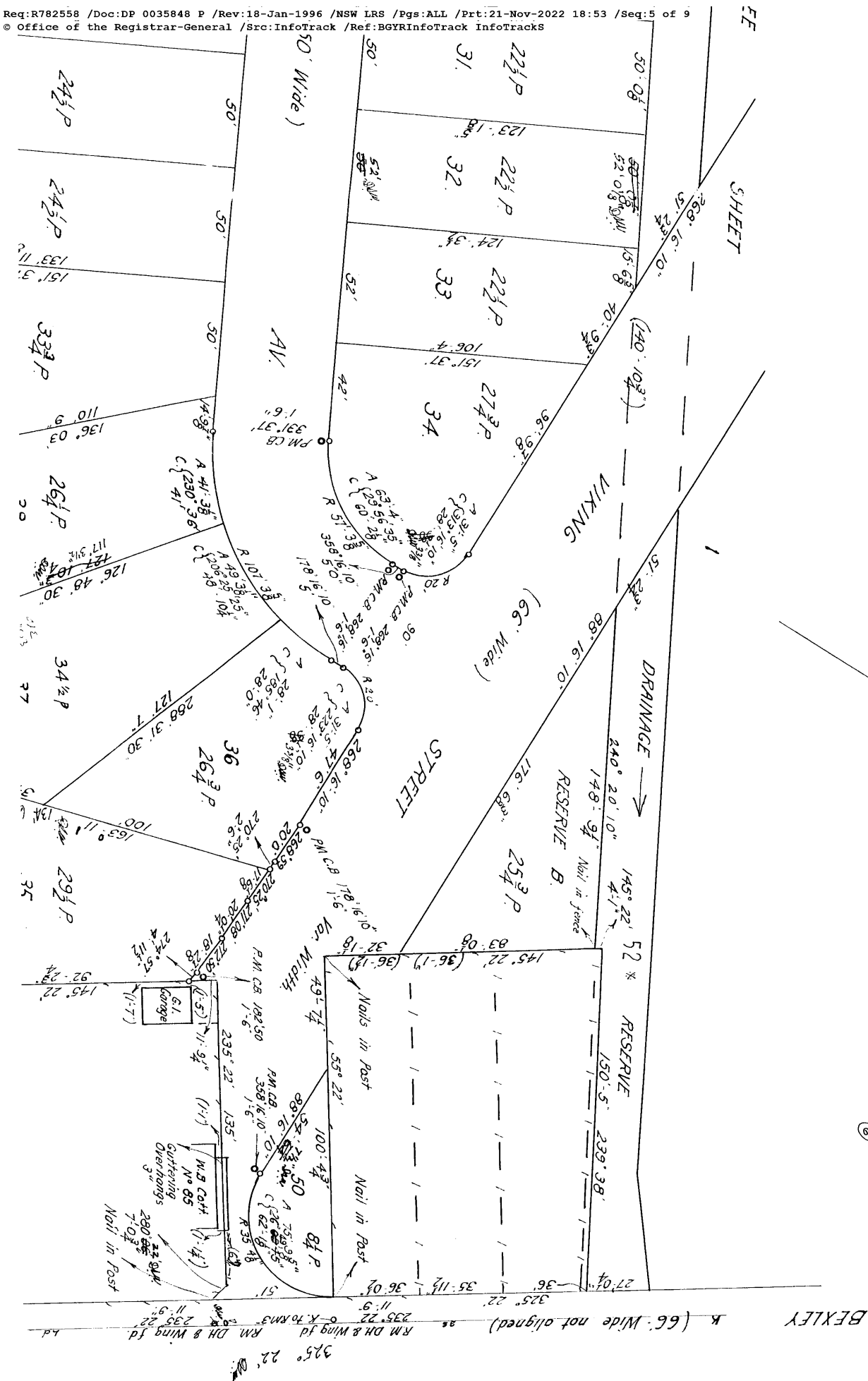
DP 35848 (E)
 H.C.P. 848

SH 2 OF 2



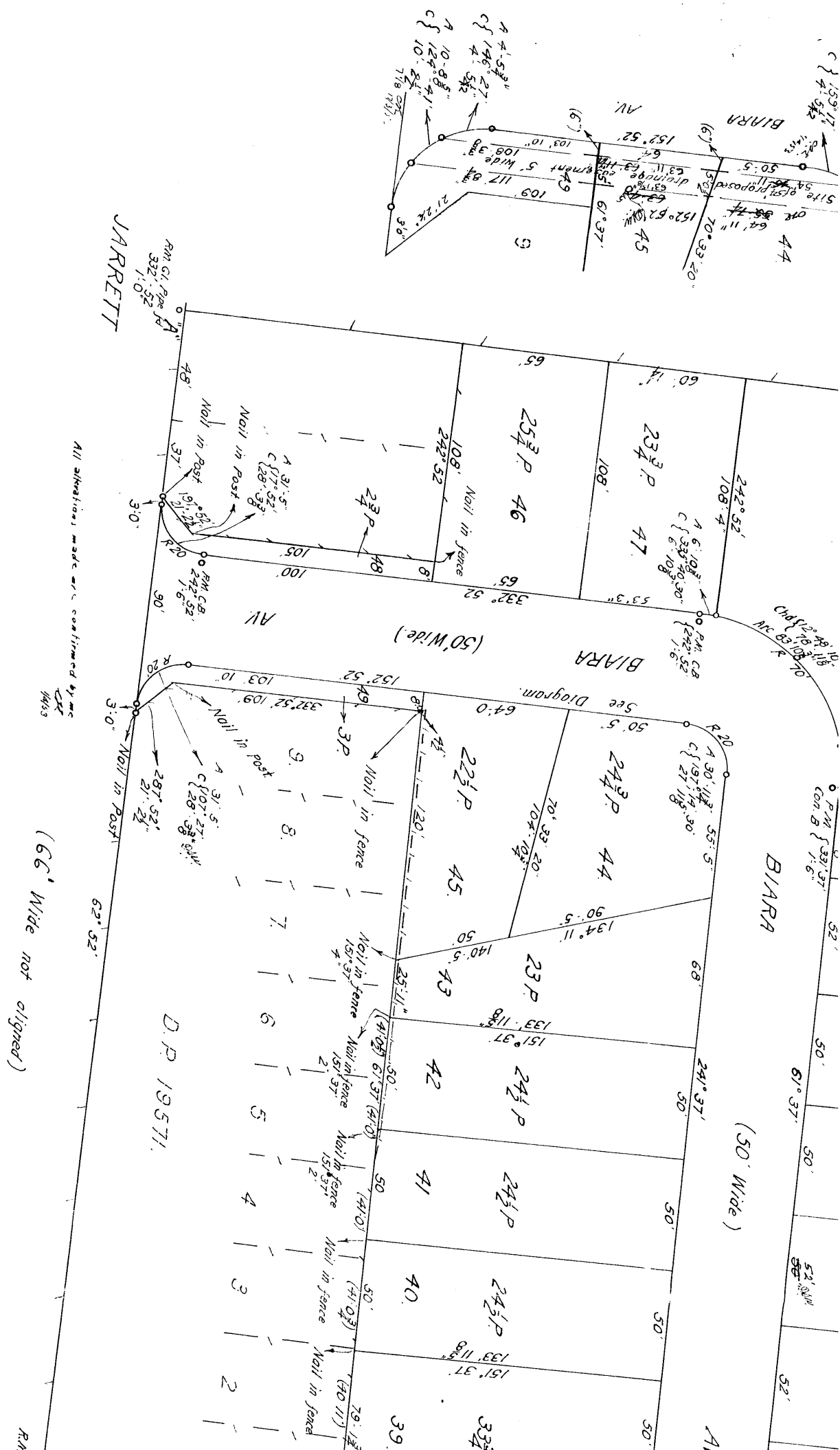
DP 35848
Sheet 2 of 2 Sheets

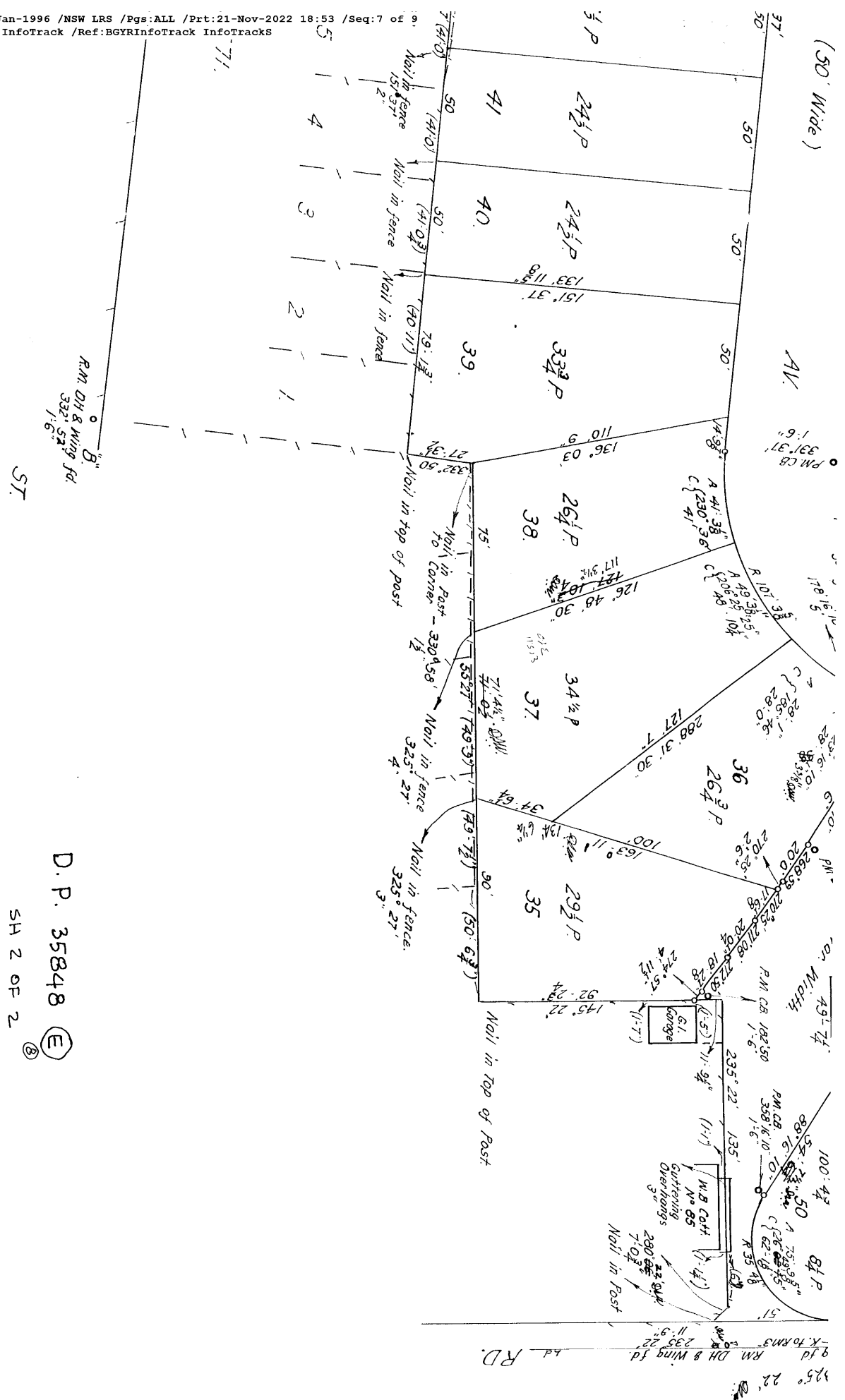
D.P. 35848 (E)
(C)



⑦ ③

54 2 OF 2





CONVERSION TABLE ADDED IN REGISTRAR GENERAL'S DEPARTMENT			
DP 35848	SH 1/2	FEET INCHES	METRES
27	2 3/4	0.070	0.070
27	2 3/4	0.229	0.229
27	2 3/4	0.305	0.305
27	2 3/4	0.384	0.384
27	2 3/4	0.461	0.461
27	2 3/4	0.538	0.538
27	2 3/4	0.615	0.615
27	2 3/4	0.692	0.692
27	2 3/4	0.769	0.769
27	2 3/4	0.846	0.846
27	2 3/4	0.923	0.923
27	2 3/4	1.000	1.000
27	2 3/4	1.077	1.077
27	2 3/4	1.154	1.154
27	2 3/4	1.231	1.231
27	2 3/4	1.308	1.308
27	2 3/4	1.385	1.385
27	2 3/4	1.462	1.462
27	2 3/4	1.539	1.539
27	2 3/4	1.616	1.616
27	2 3/4	1.693	1.693
27	2 3/4	1.770	1.770
27	2 3/4	1.847	1.847
27	2 3/4	1.924	1.924
27	2 3/4	2.001	2.001
27	2 3/4	2.078	2.078
27	2 3/4	2.155	2.155
27	2 3/4	2.232	2.232
27	2 3/4	2.309	2.309
27	2 3/4	2.386	2.386
27	2 3/4	2.463	2.463
27	2 3/4	2.540	2.540
27	2 3/4	2.617	2.617
27	2 3/4	2.694	2.694
27	2 3/4	2.771	2.771
27	2 3/4	2.848	2.848
27	2 3/4	2.925	2.925
27	2 3/4	3.002	3.002
27	2 3/4	3.079	3.079
27	2 3/4	3.156	3.156
27	2 3/4	3.233	3.233
27	2 3/4	3.310	3.310
27	2 3/4	3.387	3.387
27	2 3/4	3.464	3.464
27	2 3/4	3.541	3.541
27	2 3/4	3.618	3.618
27	2 3/4	3.695	3.695
27	2 3/4	3.772	3.772
27	2 3/4	3.849	3.849
27	2 3/4	3.926	3.926
27	2 3/4	4.003	4.003
27	2 3/4	4.080	4.080
27	2 3/4	4.157	4.157
27	2 3/4	4.234	4.234
27	2 3/4	4.311	4.311
27	2 3/4	4.388	4.388
27	2 3/4	4.465	4.465
27	2 3/4	4.542	4.542
27	2 3/4	4.619	4.619
27	2 3/4	4.696	4.696
27	2 3/4	4.773	4.773
27	2 3/4	4.850	4.850
27	2 3/4	4.927	4.927
27	2 3/4	5.004	5.004
27	2 3/4	5.081	5.081
27	2 3/4	5.158	5.158
27	2 3/4	5.235	5.235
27	2 3/4	5.312	5.312
27	2 3/4	5.389	5.389
27	2 3/4	5.466	5.466
27	2 3/4	5.543	5.543
27	2 3/4	5.620	5.620
27	2 3/4	5.697	5.697
27	2 3/4	5.774	5.774
27	2 3/4	5.851	5.851
27	2 3/4	5.928	5.928
27	2 3/4	6.005	6.005
27	2 3/4	6.082	6.082
27	2 3/4	6.159	6.159
27	2 3/4	6.236	6.236
27	2 3/4	6.313	6.313
27	2 3/4	6.390	6.390
27	2 3/4	6.467	6.467
27	2 3/4	6.544	6.544
27	2 3/4	6.621	6.621
27	2 3/4	6.698	6.698
27	2 3/4	6.775	6.775
27	2 3/4	6.852	6.852
27	2 3/4	6.929	6.929
27	2 3/4	7.006	7.006
27	2 3/4	7.083	7.083
27	2 3/4	7.160	7.160
27	2 3/4	7.237	7.237
27	2 3/4	7.314	7.314
27	2 3/4	7.391	7.391
27	2 3/4	7.468	7.468
27	2 3/4	7.545	7.545
27	2 3/4	7.622	7.622
27	2 3/4	7.699	7.699
27	2 3/4	7.776	7.776
27	2 3/4	7.853	7.853
27	2 3/4	7.930	7.930
27	2 3/4	8.007	8.007
27	2 3/4	8.084	8.084
27	2 3/4	8.161	8.161
27	2 3/4	8.238	8.238
27	2 3/4	8.315	8.315
27	2 3/4	8.392	8.392
27	2 3/4	8.469	8.469
27	2 3/4	8.546	8.546
27	2 3/4	8.623	8.623
27	2 3/4	8.700	8.700
27	2 3/4	8.777	8.777
27	2 3/4	8.854	8.854
27	2 3/4	8.931	8.931
27	2 3/4	9.008	9.008
27	2 3/4	9.085	9.085
27	2 3/4	9.162	9.162
27	2 3/4	9.239	9.239
27	2 3/4	9.316	9.316
27	2 3/4	9.393	9.393
27	2 3/4	9.470	9.470
27	2 3/4	9.547	9.547
27	2 3/4	9.624	9.624
27	2 3/4	9.701	9.701
27	2 3/4	9.778	9.778
27	2 3/4	9.855	9.855
27	2 3/4	9.932	9.932
27	2 3/4	10.009	10.009
27	2 3/4	10.086	10.086
27	2 3/4	10.163	10.163
27	2 3/4	10.240	10.240
27	2 3/4	10.317	10.317
27	2 3/4	10.394	10.394
27	2 3/4	10.471	10.471
27	2 3/4	10.548	10.548
27	2 3/4	10.625	10.625
27	2 3/4	10.702	10.702
27	2 3/4	10.779	10.779
27	2 3/4	10.856	10.856
27	2 3/4	10.933	10.933
27	2 3/4	11.010	11.010
27	2 3/4	11.087	11.087
27	2 3/4	11.164	11.164
27	2 3/4	11.241	11.241
27	2 3/4	11.318	11.318
27	2 3/4	11.395	11.395
27	2 3/4	11.472	11.472
27	2 3/4	11.549	11.549
27	2 3/4	11.626	11.626
27	2 3/4	11.703	11.703
27	2 3/4	11.780	11.780
27	2 3/4	11.857	11.857
27	2 3/4	11.934	11.934
27	2 3/4	12.011	12.011
27	2 3/4	12.088	12.088
27	2 3/4	12.165	12.165
27	2 3/4	12.242	12.242
27	2 3/4	12.319	12.319
27	2 3/4	12.396	12.396
27	2 3/4	12.473	12.473
27	2 3/4	12.550	12.550
27	2 3/4	12.627	12.627
27	2 3/4	12.704	12.704
27	2 3/4	12.781	12.781
27	2 3/4	12.858	12.858
27	2 3/4	12.935	12.935
27	2 3/4	13.012	13.012
27	2 3/4	13.089	13.089
27	2 3/4	13.166	13.166
27	2 3/4	13.243	13.243
27	2 3/4	13.320	13.320
27	2 3/4	13.397	13.397
27	2 3/4	13.474	13.474
27	2 3/4	13.551	13.551
27	2 3/4	13.628	13.628
27	2 3/4	13.705	13.705
27	2 3/4	13.782	13.782
27	2 3/4	13.859	13.859
27	2 3/4	13.936	13.936
27	2 3/4	14.013	14.013
27	2 3/4	14.090	14.090
27	2 3/4	14.167	14.167
27	2 3/4	14.244	14.244
27	2 3/4	14.321	14.321
27	2 3/4	14.398	14.398
27	2 3/4	14.475	14.475
27	2 3/4	14.552	14.552
27	2 3/4	14.629	14.629
27	2 3/4	14.706	14.706
27	2 3/4	14.783	14.783
27	2 3/4	14.860	14.860
27	2 3/4	14.937	14.937
27	2 3/4	15.014	15.014
27	2 3/4	15.091	15.091
27	2 3/4	15.168	15.168
27	2 3/4	15.245	15.245
27	2 3/4	15.322	15.322
27	2 3/4	15.399	15.399
27	2 3/4	15.476	15.476
27	2 3/4	15.553	15.553
27	2 3/4	15.630	15.630
27	2 3/4	15.707	15.707
27	2 3/4	15.784	15.784
27	2 3/4	15.861	15.861
27	2 3/4	15.938	15.938
27	2 3/4	16.015	16.015
27	2 3/4	16.092	16.092
27	2 3/4	16.169	16.169
27	2 3/4	16.246	16.246
27	2 3/4	16.323	16.323
27	2 3/4	16.400	16.400
27	2 3/4	16.477	16.477
27	2 3/4	16.554	16.554
27	2 3/4	16.631	16.631
27	2 3/4	16.708	16.708
27	2 3/4	16.785	16.785
27	2 3/4	16.862	16.862
27	2 3/4	16.939	16.939
27	2 3/4	17.016	17.016
27	2 3/4	17.093	17.093
27	2 3/4	17.170	17.170
27	2 3/4	17.247	17.247
27	2 3/4	17.324	17.324
27	2 3/4	17.401	17.401
27	2 3/4	17.478	17.478
27	2 3/4	17.555	17.555
27	2 3/4	17.632	17.632
27	2 3/4	17.709	17.709
27	2 3/4	17.786	17.786
27	2 3/4	17.863	17.863
27	2 3/4	17.940	17.940
27	2 3/4	18.017	18.017
27	2 3/4	18.094	18.094
27	2 3/4	18.171	18.171
27	2 3/4	18.248	18.248
27	2 3/4	18.325	18.325
27	2 3/4	18.402	18.402
27	2 3/4	18.479	18.479
27	2 3/4	18.556	18.556
27	2 3/4	18.633	18.633
27	2 3/4	18.710	18.710
27	2 3/4	18.787	18.787
27	2 3/4	18.864	18.864
27	2 3/4	18.941	18.941
27	2 3/4	19.018	19.018
27	2 3/4	19.095	19.095
27	2 3/4	19.172	19.172
27	2 3/4	19.249	19.249
27	2 3/4	19.326	19.326
27	2 3/4	19.403	19.403
27	2 3/4	19.480	19.480
27	2 3/4	19.557	19.557
27	2 3/4	19.634	19.634
27	2 3/4	19.711	19.711
27	2 3/4	19.788	19.788
27	2 3/4	19.865	19.865
27	2 3/4	19.942	19.942
27	2 3/4	20.019	20.019
27	2 3/4	20.096	20.096
27	2 3/4	20.173	20.173
27	2 3/4	20.250	20.250
27	2 3/4	20.327	20.327
27	2 3/4	20.404	20.404
27	2 3/4	20.481	20.481
27	2 3/4	20.558	20.558
27	2 3/4	20.635	20.635
27	2 3/4	20.712	20.712
27	2 3/4	20.789	20.789
27	2 3/4	20.866	20.866
27	2 3/4	20.943	20.943
27	2 3/4	21.020	21.020
27	2 3/4	21.097	21.097
27	2 3/4	21.174	21.174
27	2 3/4	21.251	21.251
27	2 3/4	21.328	21.328
27	2 3/4	21.405	21.405
27	2 3/4	21.482	21.482
27	2 3/4	21.559	21.559
27	2 3/4	21.636	21.636
27	2 3/4	21.713	21.713
27	2 3/4	21.790	21.790
27	2 3/4	21.867	21.867
27	2 3/4	21.944	21.944
27	2 3/4	22.021	22.021
27	2 3/4	22.098	22.098
27	2 3/4	22.175	22.175
27	2 3/4	22.252	22.252
27</			

F457964 24.5 51
(2 Sheets)

DP 35040 (E) ①

H.C.P. 848

SH 1 OF 2

PLAN

of subdivision of land resumed for Ho
notified in Govt Gazette 7th
PARISH OF ST. GEORGE COUNTY O

Scale: 40 feet to an inch

